



PCB Cavity Fire Barrier

Suitable for Timber Frame and Masonry Constructions

Made In Ireland

The **Pyro Cavity Barrier (PCB)** range consists of rockfibre enclosed in a pvc sleeve. The following fully independently fire tested products are suitable for use in **Timber Frame** and **Masonry cavities**.

PCB 50/60 (1200mm x 65mm wide x 65mm thick) is a cavity fire barrier to fit a 50mm cavity which achieved **1 hour integrity** and **1 hour insulation** in vertical applications and **1 hour integrity** and **30 minute insulation** ratings in horizontal applications.

PCB 60/100 (1200mm x 110mm wide x 100mm thick) is a cavity fire barrier to fit a 100mm cavity which achieved **1 hour integrity** and **1 hour insulation** in both vertical & horizontal applications.

Fire Testing:

The products have been fire tested by Warrington Fire Research to BS476:Pt 20 Test reference: 137973 on 23rd March 2004

Regulations:

The Building Regulations require that a building shall be designed and constructed so that the unseen spread of fire and smoke within concealed spaces in its structure and fabric is inhibited. Pyro Cavity Barriers fulfil this function along with providing improved acoustic performance by reducing flanking noise within the cavity.

Design & installation:

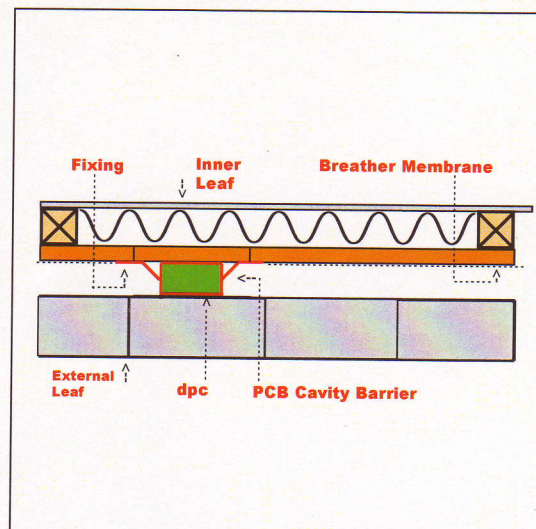
PCB Fire Barriers are designed to be compression fitted into the cavity. Ensure that the product is tightly installed with closely butted joints. Separate DPC's must be used in both vertical and horizontal applications and in timber frame construction the breather membrane must over lap the top flange of the PCB. Fixings to be at a maximum of 150mm centre's in all applications.

Health & Safety:

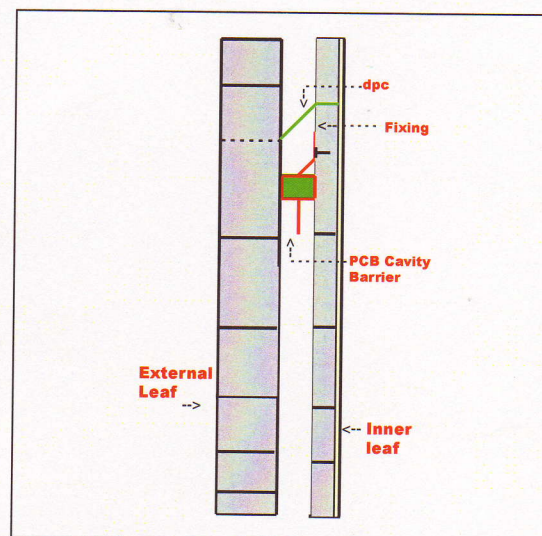
A COSHH data sheet is available from Customised Insulation.

Technical Support:

Technical services available from Customised Insulation.



Timber frame vertical view



Masonry horizontal view



Unit 31G Rosemount Park Drive, Rosemount Business Park,
Ballycoolin Road, Dublin 11.
Phone 8829990 Fax 8829992 Mobile 087-2349937
Email cim@indigo.ie

Your Supplier is :

Edward Moore,
20 Ferrymans Crossing,
North Wall,
Dublin 1

Phone: 01-8683217

As part of our policy of ongoing improvement, we reserve the right to modify, alter or change product specifications without giving notice. Product illustrations are representative only. All information contained in this document is provided for guidance only, and as Customised Insulation Manufacturers has no control over the installation methods of the products, or of prevailing site conditions, no warranties expressed or implied are intended to be given as to the actual performance of the products mentioned or referred to, and no liability will be accepted for any loss, damage or injury arising from the use of the information given of products mentioned or referred to herein